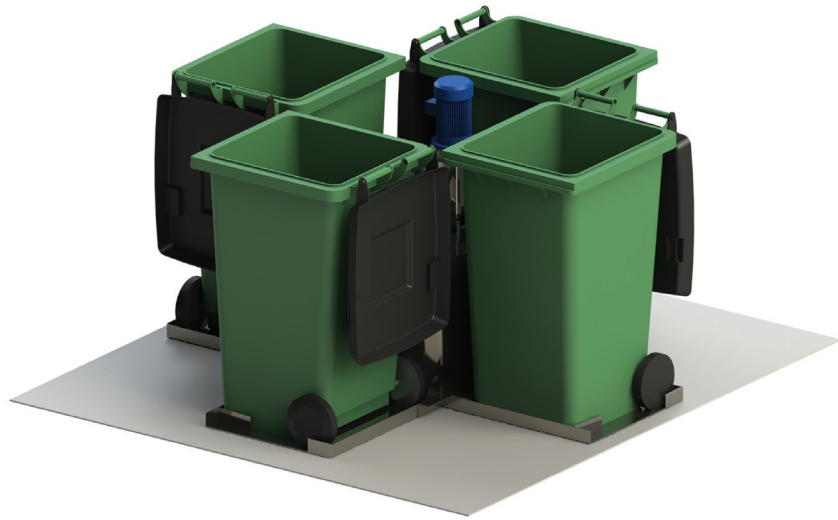


240 LITRE CAROUSEL SYSTEM

PRODUCT INFORMATION

Elephants Foot 240 litre bin Carousel System is a versatile waste handling solution for many types of multi-storey or multi-level developments. The Carousel System collects waste or recycling being disposed from the floors above through the chute system, discharging the material via a hopper that feeds the bins positioned on the unit. Electromechanically driven with automated operation, the Carousel System automatically replaces full bins by a revolving circular platform. Once all the bins on the system are filled, an indicator light will illuminate signifying that the bins are ready for withdrawal and collection. Available with or without compaction unit, our standard 240 litre bin Carousel System is available in 4 or 5 bin options.



SPECIFICATIONS

System Control	Electric PLC
Power Supply	415 V AC / 20A / 5 PIN
Motor Size (kW)	0.37
Maximum bin load	96 kg
Noise (dBA)	<85
Bin Size (L)	240
Cycle time (sec)	60
Bin Quantity options	4 or 5

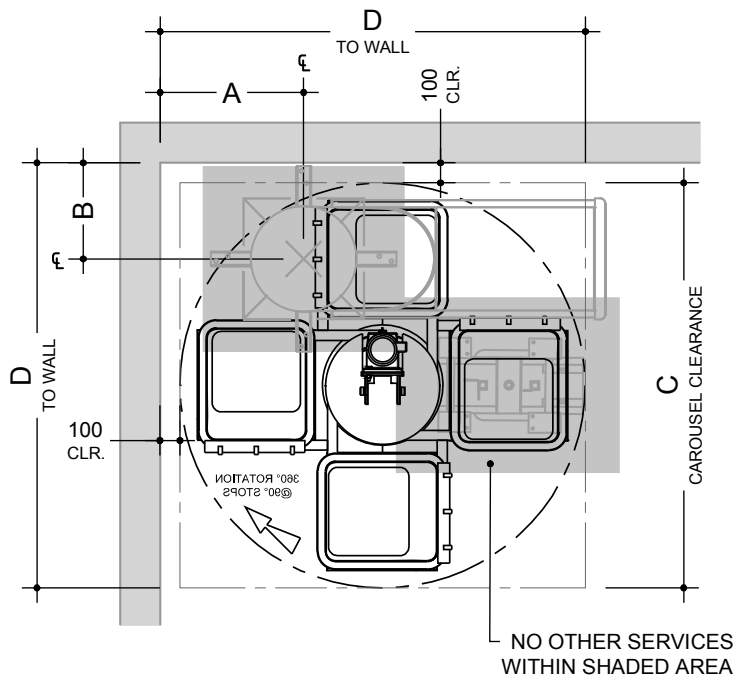
OPTIONAL EXTRAS

- Compaction unit – Please refer to the bin compactor product information sheet for details and specifications
- Enhanced safety add on's – Interlocking barriers, occupancy sensors or safety light curtains (presence sensing light barriers)
- Full bin SMS and email notification
- CMMS and BMS integration
- Extend warranty – Terms and conditions apply

STANDARD FEATURES & BENEFITS

- Simple operation with user friendly controls
- Increased waste servicing efficiency for the development
- Automatic system control with manual override
- Robust unit construction for long performance life
- Low service and maintain costs
- Rotating flashing beacon (activated during operation)
- Quiet and efficient system operation
- Maximise safety for residents, caretakers and collectors
- Restrained design with minimal moving parts
- Can suit low ceiling clearances
- Floor contact components fully galvanised steel
- Retro fitting options to suit other chutes systems
- Compliant with relevant Building Codes and Standards
- Standard 12 month warranty

CAROUSEL SYSTEM



240 LITRE BIN

240 LITRE BIN CAROUSEL SYSTEM

No. of Bins	Reference (mm)			
	A	B	C	D
4	750	500	2020	2200
5	900	600	2460	2600

Notes:

Bins not provided by Elephants Foot

Drawings shown are for general information purposes only and provide minimum equipment spatial requirements for waste room design.

These drawings are not intended for site specific use or for construction. Each project is unique and will be designed to suit.

Additional equipment options, systems and configurations are available. For design assessment, information and advice, please contact an Elephants Foot design consultant on 1300 435 374

