

MULTIPRESS

Economic success depends on several factors

IMPROVED CAPACITY - UP TO 20% MORE FILL VOLUME



due to the newly developed press geometry. Tapered press bottom, curved press plate, high quality piston guiding and improved press geometry ensure an effective retention system. Up to 20% higher compaction!

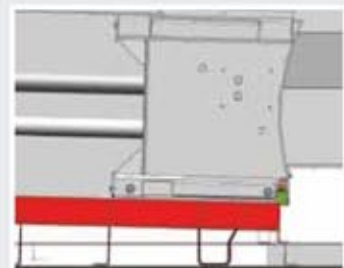
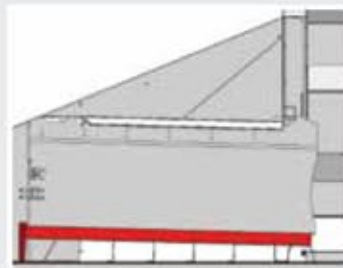
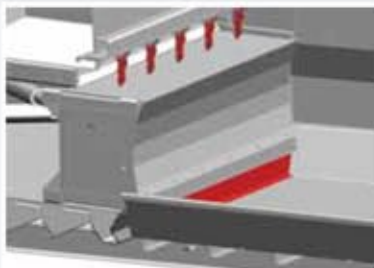


LARGE FILLING OPENING

The double build-up prevention by means of retaining tines and a 152 mm high trash holder in combination with the immersion depth of the compressing ram of 334 mm keeps the pressing area free and permanently available.

Type MP 1.4: 1050 x 1860 mm → 1,4 m³ / stroke.

Type MP 1.9: 1450 x 1860 mm → 1.9 m³ / stroke.





UNIVERSAL DEPLOYMENT AND VARIABLE EQUIPMENT THAT IS EASY TO RETROFIT

Regardless of whether ground, ramp or building loading – additional equipment can be bolted on for quick and easy adaptation to any disposal location.



TIPPING DEVICE

Preparation provided as standard - no welding needed for retrofitting.



OPERATION

Phase adapter and connection for remote control are supplied as standard.



SIDE-HUNG OR TOP-HUNG REAR DOOR

The back wall is easily converted from a side-hung door to a top-hung door. Standard 8-point locking system for leak tight seal. The hook on the back can be used for hoisting it on to the lorry.



SAFETY UNLOCKING DEVICE WITH DOOR CATCH SYSTEM

The operator is always outside of the danger area when opening the door. Through a special door catch system, people who are not in the field of vision remain protected.

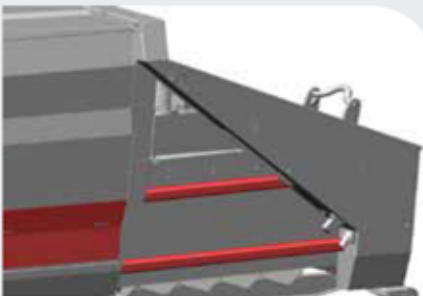


SAFETY IS TOP PRIORITY

OPTIONAL: BULKY WASTE MODEL - REINFORCED CONSTRUCTION FOR BULKY WASTE

The following components are reinforced on this model:

- Piston guide, piston and yoke
- Side walls of the container
- Floor cleaner on the piston head as standard



HYDRAULICS/ELECTRICS

Easy to access and clearly laid out. Accident prevention as no climbing aids are required. Easy to service thanks to ergonomic working position.

Technical data

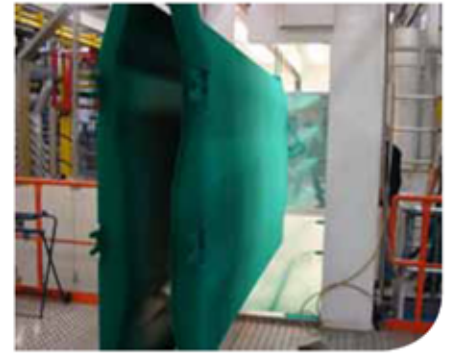
MULTIPRESS

	20 - 1.4	20 - 1.9
Container volume	20 m ³	20 m ³
Length (without rear hook)	6450 mm	6850 mm
Length (incl. rear hook)	6690 mm	7090 mm
Width & height	2460 x 2704 mm	2460 x 2704 mm
Height of opening	1400 mm	1400 mm
Volumes per stroke	1,4 m ³	1,9 m ³
Height of the pressing piston	700 mm	700 mm
Press opening W x L	1860 x 1050 mm	1860 x 1450 mm
Filling opening W x L	1860 x 1753 mm	1860 x 2153 mm
Compression force	340 kN	340 kN
Pressing cycle	40 sec.	55 sec.
Motor	5,5 kW	5,5 kW
Slow fuse	16 A	16 A
Unladen weight	5100 kg	5360 kg
Cone	3 sides of 100 mm	3 sides of 100 mm

Container volumes 16, 18, 20, 22, 24 m³ - 2 m³ = L +/- 400 mm

WORLD FIRST

POWDER COATING - IDENTICAL PAINT QUALITY AS THE CAR INDUSTRY



CED - Cathodic electrodeposition coating and powder topcoat

Pöttinger coating line technology incorporates cathophoretic dip priming and powder coating.

This is the most environmentally friendly painting method because the manufacture is carried out without solvents.

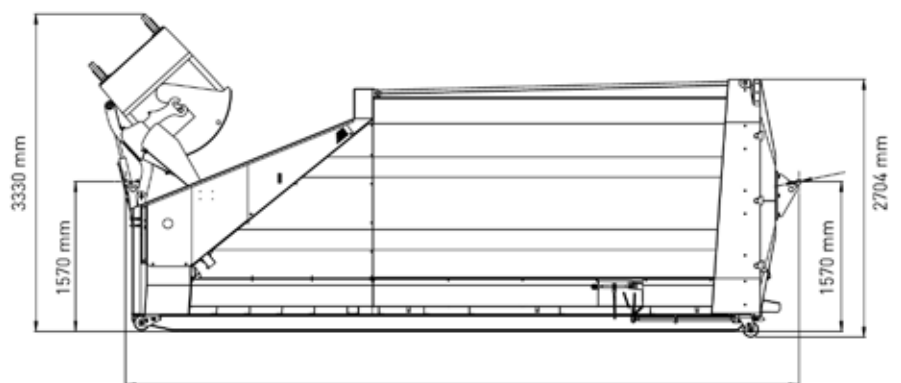
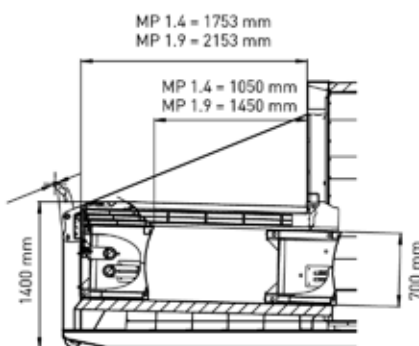
First press container manufacturer who offers powder coating:

- Durable
- Hard-wearing
- UV-resistant
- Uniform paint thickness
- Environmentally friendly / no solvents

The individual steps of this procedure:

Automatic sandblasting, 9 zones dip treatment with zinc phosphate, 3 zones CED (cathodic electrodeposition coating – uniform primer thickness and best corrosion protection) using water based paint, baking process at 160°C and the powder coating with the final baking process at 180°C – 200°C.

By this environmental friendly process all areas are completely coated and all parts show hard-wearing, elasticity and are UV resistant.



MP 1.4 16 m³ = 5890 / 18 m³ = 6290 / 20 m³ = 6690 / 22 m³ = 7090 / 24 m³ = 7490
 MP 1.9 16 m³ = 6290 / 18 m³ = 6690 / 20 m³ = 7090 / 22 m³ = 7490 / 24 m³ = 7890